

Connections to THINKING

Read the spelling words and sentences.

end in al

1.

2.

3.

4.

5.

6.

end in el

7.

8.

9.

10.

11.

end in il

12.

13.

14.

15.

16.

end in le

17.

18.

19.

20.

1. humble

humble

2. angel

angel

3. council

council

4. pupil

pupil

5. final

final

6. normal

normal

7. angle

angle

8. syllable

syllable

9. festival

festival

10. panel

panel

11. evil

evil

12. rural

rural

13. fossil

fossil

14. scramble

scramble

15. marvel

marvel

16. loyal

loyal

17. general

general

18. parcel

parcel

19. civil

civil

20. counsel

*counsel*A **humble** person does not brag.Marcie played an **angel** in the show.The **council** planned a town park.The new **pupil** likes art class.The **final** batter hit a home run.A **normal** school day lasts six hours.An **angle** of thirty degrees is acute.Mark pronounced each **syllable**.Mardi Gras is a huge **festival**.The **panel** is made of oak.An **evil** king took all their land.On the **rural** road, we saw sheep.The **fossil** had the shape of a bone.Please **scramble** my eggs for me.A thousand-year-old tree is a **marvel**.A German shepherd is a **loyal** pet.The **general** idea seemed reasonable.A lumpy **parcel** sat on the table.In a **civil** debate, no one yells.Ann can **counsel** you about baby-sitting.**Think & Sort** the spelling words.All the spelling words end in the **schwa with I** sound.1-6. Write the words that end in **al**.7-11. Write the words that end in **el**.12-16. Write the words that end in **il**.17-20. Write the words that end in **le**.**Remember**The final **schwa with I** sound can be spelled **al** as in **final**, **el** as in **panel**, **il** as in **civil**, and **le** as in **angle**.

Word Clues

Write the spelling word that most closely fits the clue. Use the **Spelling Dictionary** to check your answers.

1. an army officer
2. opposite of **urban**
3. celebration, holiday
4. faithful to a person or idea
5. no more after this
6. opposite of **unusual**
7. You do it if you are in a hurry.
8. If you are polite, you are this.
9. part or all of a word
10. opposite of **good**

Use Synonyms

Write the spelling word that could replace each underlined word. Circle the two commonly confused words.

11. The mail carrier delivered a large package.
12. Every teacher was once a student.
13. Let's cover this wall with an oak board.
14. In the stone was a trace of a leaf.
15. The spirit costume glistened onstage.
16. There is a sharp turn in the road.
17. Yuka has great talent, but she is modest.
18. This giant pumpkin is a miracle.



Use the
Dictionary

A **homophone** is a word that sounds like another word but has a different spelling and different meaning. Study the definitions for **council** and **counsel** in your **Spelling Dictionary**. Write the correct spelling word to complete each sentence.

19. At the _____ meeting, the town leaders decided to build a town pool.
20. I always ask for Mom's _____ when making hard choices.

Word Clues

1.

2.

3.

4.

5.

6.

7.

8.

9.

10.

Use Synonyms

11.

12.

13.

14.

15.

16.

17.

18.

Use the Dictionary

19.

20.

Connections to READING

humble
normal
evil
loyalangel
angle
rural
generalcouncil
syllable
fossil
parcelpupil
festival
scramble
civilfinal
panel
marvel
counsel

Complete the Analogies

1.

2.

3.

4.

5.

6.

7.

Make Inferences

8.

9.

10.

11.

12.

13.

14.

15.

Use Context Clues

16.

17.

18.

19.

20.

Complete the Analogies

Write a spelling word to complete each analogy.

1. Glass is to pane as wood is to ____.
2. Team is to athlete as class is to ____.
3. Talk is to speak as advise is to ____.
4. Car is to tire track as dinosaur's foot is to ____.
5. Paragraph is to sentence as word is to ____.
6. Diner is to restaurant as party is to ____.
7. Part is to whole as particular is to ____.

Make Inferences

Write a spelling word to complete each sentence.

8. Citizens' liberties are protected by ____ rights.
9. For once the city ____ members all agreed.
10. The story was about an ____ and a human being.
11. His temperature has returned to ____.
12. Two walls meet at a right ____.
13. Chad is ____ about his talents.
14. People say that an ____ monster once ruled these woods.
15. Everyone is trying to ____ to the windows to see the snow.

Use Context Clues

Write spelling words to complete the paragraph.

What happens to a letter or 16. after you drop it off at the post office? You would 17. at the machines and people who keep the mail system moving. Postal workers must be 18. and honest employees. Mail is sorted according to its 19. destination. Mail carriers then deliver the mail in the cities and 20. areas.

marvel
final
parcel
loyal
rural

Proofread a Tribute

Proofread the tribute below for ten misspelled words. Then rewrite the tribute. Write the spelling words correctly and make the corrections indicated by the proofreading marks.

⌘ The newest pupel in my class is Ginny. although in general, she is humbil about it, Ginny is a marvul at math. I needed ~~t~~utoring in math, and Ginny was a loyil friend. With her help, I got an A on the finel exam. Ginny's councel helped me scrambel through even the most difficult problems! Friendship is easy when life is normel, but ~~w~~e sometimes a friend has to be more like an angil.

Proofreading Marks

≡	Make Uppercase
/	Make Lowercase
^	Add
~	Delete
⊙	Add a Period
⌘	Indent

Informative/Explanatory Writing

Write a Tribute

Think of someone who has been good to you. Write about this person. Tell how you met the person and what he or she did to help you. Use as many spelling words as you can.

- Use the writing process: prewrite, draft, revise, edit, and publish.
- Describe the qualities you admire about the person. Use descriptive language to convey your thoughts and feelings about the person.
- Use complete sentences with correct capitalization, punctuation, grammar, and spelling.
- Read your tribute. Circle three words that may be misspelled. Use a print or online dictionary to check the spelling.

Transfer

Think of three descriptive words that are spelled with final **le**. Write the words and their definitions in your Spelling Journal.

Extend & Transfer

Word Study



Pattern Power

1.

2.

3.

4.

5.

6.

Word Study

7.

8.

9.

10.

11.

12.

13.

14.

Word Building

15.

16.

17.

18.

19.

20.

battle	normal	angel	counsel	arrival
eagle	angle	festival	cancel	stencil
jungle	syllable	evil	favorable	possible
royal	panel	rural	label	additional
vowel	fossil	marvel	rational	
council	scramble	loyal	tunnel	
pupil	general	parcel	mussel	
final	humble	civil	freckle	

Use words from the spelling list above to complete the items.

Pattern Power

1–6. Write the words that have the final /əl/ sound spelled **il**.

Circle the word that can mean “student” or “part of an eye.”

Word Study

Write the spelling word that is related to one of the words below. Circle the word that dropped the final **e** when the **-al** ending was added.

7. royalty

8. festive

9. finally

10. loyalty

11. normalize

12. arrive

13. generalization

14. addition

Word Building

Replace or remove the underlined letter(s) in each of these words to make a spelling word.

15. nationality

16. mural

17. tumble

18. tangle

19. cancel

20. billable

Science



Word Hunt

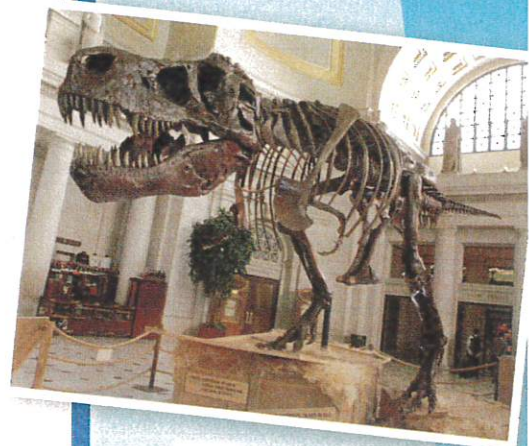
Read the article below and look for words with the final /əl/ spelling pattern.

In August 1990, Sue Hendrickson was working as a fossil hunter. The team she worked with was at a dig near Faith, South Dakota. When most of the team went into town to get a tire fixed, Sue stayed behind to look for fossils.

Sue spotted pieces of bone at the base of some steep hills called bluffs. Then she looked up and saw big bones sticking out of the side of a bluff. She scrambled up some rocks to get a closer look and saw what she thought were *Tyrannosaurus rex* bones. Was it possible? A panel of experts said yes. Sue had found a huge, nearly complete *T. rex*. No one knows whether the royal dinosaur is a “king” or a “queen,” but the dinosaur was nicknamed Sue for the woman who found it.

For years there was a battle over who owned the parcel of land where Sue was found. Finally Sue was put up for auction. The Field Museum in Chicago bought Sue for more than \$8 million. The museum received money from several companies, the “guardian angels” that enabled the museum to prepare a place for Sue.

After Sue’s arrival at the museum, scientific counsel was needed. This was not your normal fossil; it was a marvel. Removal of the rock attached to the bones took an incredible 25,000 hours of work.



1.

2.

3.

4.

5.

6.

7.

8.

9.

10.

WORD SORT

1–5. Write the words in which final /əl/ is spelled **al**.

6–10. Write the words in which final /əl/ is spelled **el**.